

TECHNICAL DATA

| Item (unit: mm) | Value | |
|-----------------------------------|----------------|---------------|
| Total length | 12340 | |
| Total width | 4154 | |
| Total height(to the top of boom) | 4675 | |
| Slewing radius of tail | 3940 | |
| Tail length | 3940 | |
| Ground clearance of counterweight | 1502 | |
| Min. ground clearance | 820 | |
| Ground contact length of track | 4690 | |
| Track length | 5870 | |
| Track gage | 3300 | |
| Track shoe width | 650 | |
| Total height(to the top of cab) | 4675 | |
| Rotary table width | 3284 | |
| Item | Unit | parameters |
| Total weight | Kg | 68500 |
| Standard bucket capacity(SAE) | m ³ | 4.10 |
| Rated power | KW | 354 |
| Engine model | -- | Cummins QSX15 |
| Max. torque | N.m/rpm | 2203/1400 |
| Traveling speed (high/low) | Km/h | 4.15/2.72 |
| Slewing speed | rpm | 6.8 |
| Gradeability | -- | 35° (70%) |
| Max. drawbar pull | kN | 489 |
| Max. Digging force of arm | kN | 385 |
| Max. Digging force of bucket | kN | 312 |

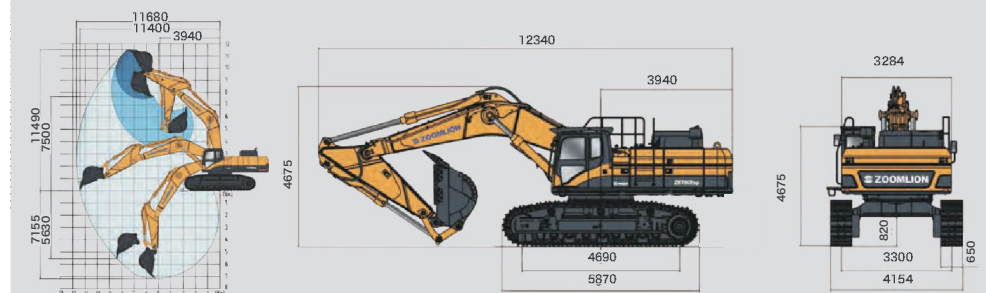
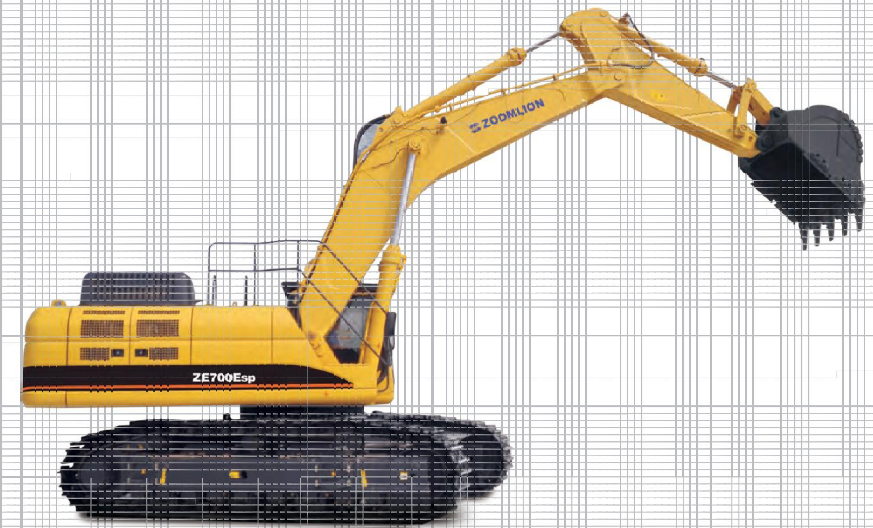
WORKING RANGE

| Item (unit: mm) | Value | |
|-------------------------------------|-------|--|
| Max.excavating distance | 11680 | |
| Max. horizontal excavating distance | 11400 | |
| Max.excavating depth | 7155 | |
| Max. excavating depth | 5630 | |
| Max.excavating height | 11490 | |
| Max.dumping height | 7500 | |
| Min.slewing radius | 3940 | |

EXCAVATOR

ZOOMLION

ZE700ESP



www.zoomlion.com